

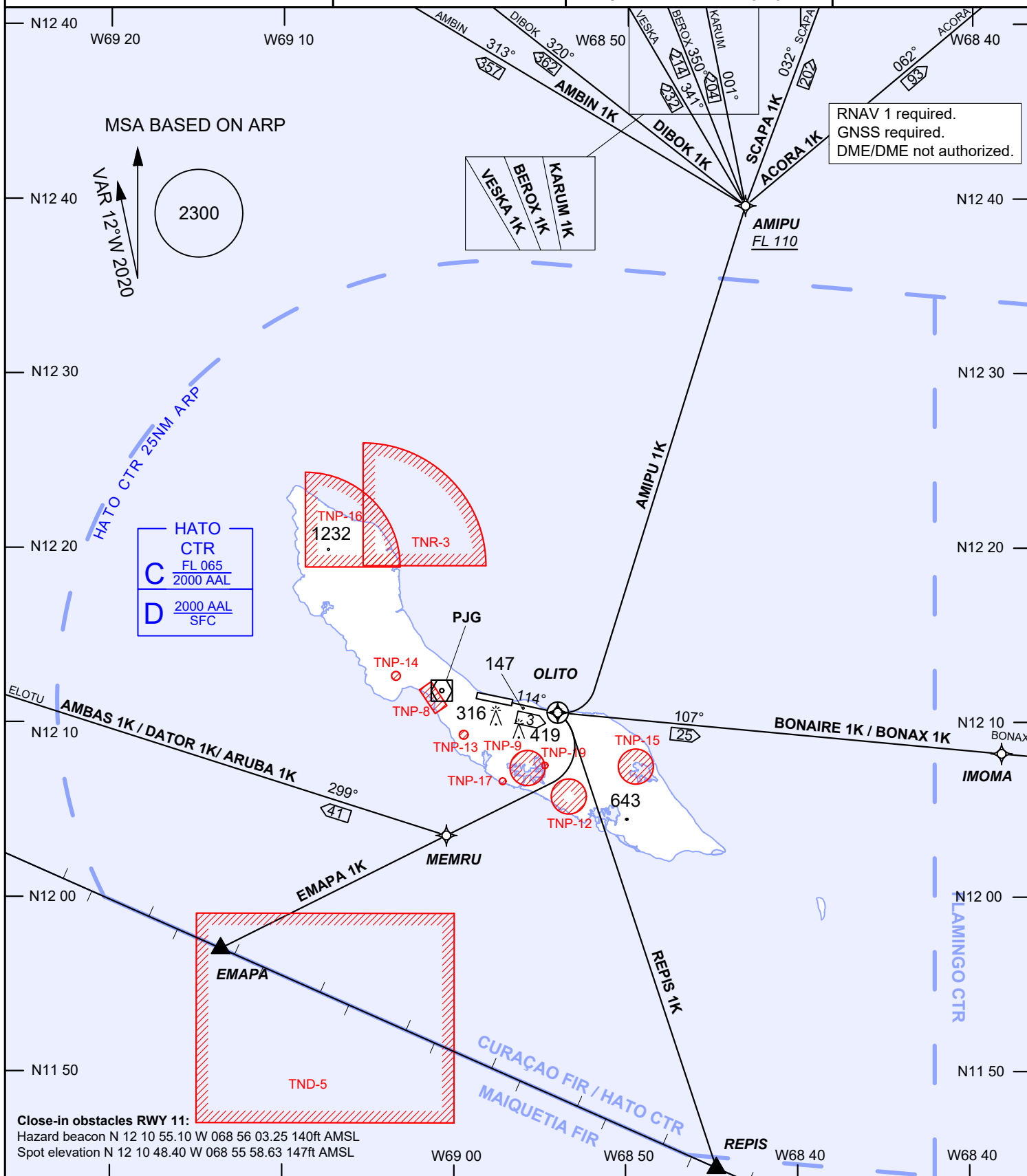
AIP DUTCH CARIBBEAN

STANDARD DEPARTURE CHART
INSTRUMENT (RNAV) - ICAO

AD ELEVATION: 36
TRANS LEVEL: FL 040
TRANS ALT: 2500 (2464)

CURAÇAO CTRL 124.1/127.1
CURAÇAO TRACON 119.8
HATO TWR 118.3
HATO ATIS 132.6

RWY 11
AEROPUERTO HATO
(TNCC), CURAÇAO



RNAV 1 required.
GNSS required.
DME/DME not authorized.

HATO
CTR
FL 065
2000 AAL
D 2000 AAL
SFC

Close-in obstacles RWY 11:
Hazard beacon N 12 10 55.10 W 068 56 03.25 140ft AMSL
Spot elevation N 12 10 48.40 W 068 55 58.63 147ft AMSL

| | | | | | | |
|---|-----------------------------|----------|--------|------------|--------|-------------|
| 1. PJG VOR 116.7MHz. Declination 12°W. | ICAO SID DESIGNATORS | | TNP-8 | SFC - 400 | TNP-16 | SFC - 2500 |
| 2. All SIDs require minimum 225 ft/NM up to OLITO. | ACORA 1K | DATOR 1K | TNP-9 | SFC - 2500 | TNP-17 | SFC - 2500 |
| 3. AMIPU 1K: After passing AMIPU, expect ATC instructions to first en-route waypoint. | AMBAS 1K | DIBOK 1K | TNP-12 | SFC - 2500 | TNP-19 | SFC - 2500 |
| 4. See TNCC AD 2.21 for noise abatement procedures. | AMBIN 1K | EMAPA 1K | TNP-13 | SFC - 2500 | TNR-3 | SFC - NOTAM |
| 5. Altitudes, elevations and heights in feet, distances in nautical miles, bearings are magnetic. | AMIPU 1K | KARUM 1K | TNP-14 | SFC - 900 | TND-5 | SFC - 10000 |
| | ARUBA 1K | REPIS 1K | TNP-15 | SFC - 2500 | | |
| | BEROX 1K | SCAPA 1K | | | | |
| | BONAIRE 1K | VESKA 1K | | | | |
| | BONAX 1K | | | | | |

